

PT65H

FLOAT & THERMOSTATIC STEAM TRAPS

DESCRIPTION:

High capacity float and thermostatic steam trap with internal air vent, designed for draining condensate from all types of low and medium pressure steam heating and process equipment. Typical applications include unit heaters, heat exchangers, driers and jacketed vessels. Horizontal installation.

AVAILABLE TYPES:

PT65H: with thermostatic air vent
PT65H-S: SLR (with steam lock release)
PT65H-C: with thermostatic air vent and SLR

FEATURES:

Modulating discharge.
Discharges condensate at steam temperature.
Excellent air venting (by thermostatic air vent).

USE: Saturated and superheated steam

SIZES: DN40, 50

CONNECTIONS: Screwed (NPT/BSPT/BSP)

LIMITING CONDITIONS:

PMA: Max. allowable pressure	16 bar
TMA: Max. allowable temperature	220 °C
PMO: Max. operating pressure	14 kg
TMO: Max. operating temperature	220 °C
Cold hydro test pressure	24 bar

INSTALLATION:

Horizontal installation with flow from left to right. The trap should be installed horizontally below the drain point of the equipment in a position such that the float arm is in a horizontal plane and the float rises and falls vertically, with the flow direction as indicated on the cover. The arrow on the nameplate should be pointing vertically upwards.

Max. differential pressure range:

PT65H (Double Orifice): 4.5 bar

PT65H (Rotary Orifice): 14 bar

TRAP DISCHARGE CAPACITY IN kg/hr

MODEL		Differential Pressure (bar)	0.04	0.14	0.35	0.7	1	1.4	2.8	4.5
PT65H-4.5	Double Valve	Discharge Capacity	3150	5220	6045	6390	7400	8025	11550	15300
MODEL		Differential Pressure (bar)	1	2	4	6	8	10	12	14
PT65H-14	Rotary	Discharge Capacity	4660	6590	9320	11410	13180	14730	16140	17430

MATERIAL:

NO.	PART	MATERIAL	QTY. (Nos.)
1.	BODY	CAST IRON	01
2.	COVER	CAST IRON	01
3.	GASKET	GRAPHITE WITH SS REINFORCEMENT	01
4.	VALVE SEAT	AISI 410/420	02
5.	VALVE PIN		02
6.	BALL FLOAT	AISI 304	01
7.	LEVER	AISI 304	01
8.	AIR VENT	STAINLESS STEEL	01
9.	BOLT	HIGH TENSILE	06
10.	DRAIN PLUG	CARBON STEEL	01
11.	STEM	AISI 304	01
12.	SLR UNIT	AISI 304	01

WEIGHTS: Screwed – around 30 kg.

AVAILABLE SPARES:

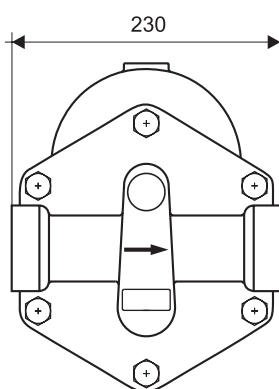
The Housing Assly., Air Vent Assly., Gaskets

HOW TO ORDER:

PT65H-14 DN40 BSP

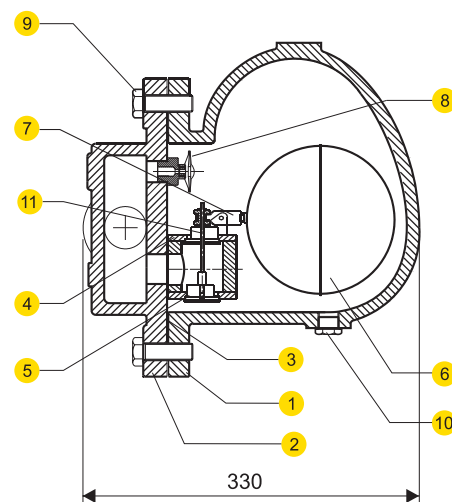
ORDERING INFORMATION:

- 1) Inlet Pressure in bar(g)
- 2) Back Pressure in bar(g)
- 3) Operating Temperature in °C
- 4) Condensate Load in kg/hr
- 5) Size & Model
- 6) End Connections

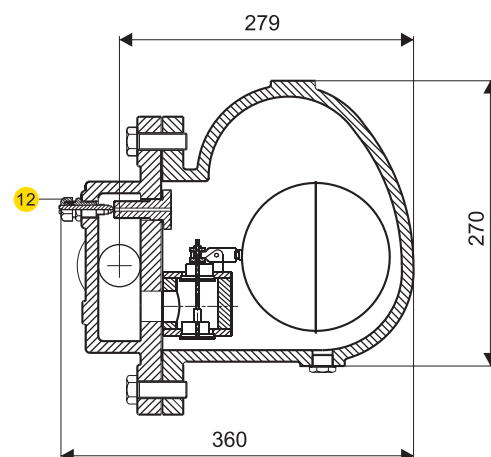


DIMENSIONS - Nominal in mm

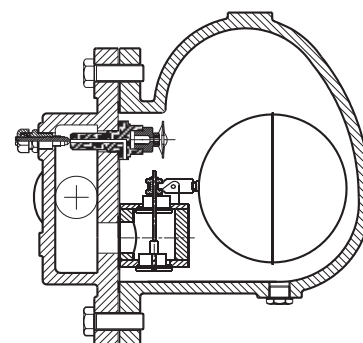
PT65H - Double Orifice



PT65HS - Double Orifice



PT65HC - Double Orifice



MATERIAL:

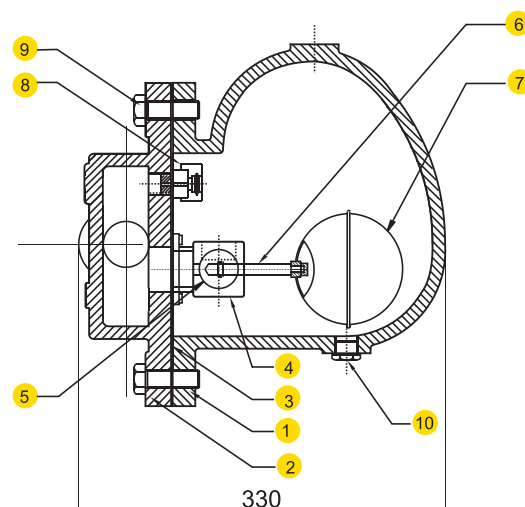
NO.	PART	MATERIAL	QTY. (Nos.)
1.	BODY	CAST IRON	01
2.	COVER	CAST IRON	01
3.	COVER GASKET	GRAPHITE WITH SS REINFORCEMENT	01
4.	VALVE SEAT HOUSING	AISI 304	01
5.	VALVE PIN		01
6.	STEM	AISI 304	01
7.	FLOAT ASSLY.	AISI 304	01
8.	AIR VENT	AISI 304	01
9.	BOLT	HIGH TENSILE	06
10.	DRAIN PLUG	CARBON STEEL	01
11.	SLR UNIT	AISI 304	01

WEIGHTS: Screwed – 30 kg

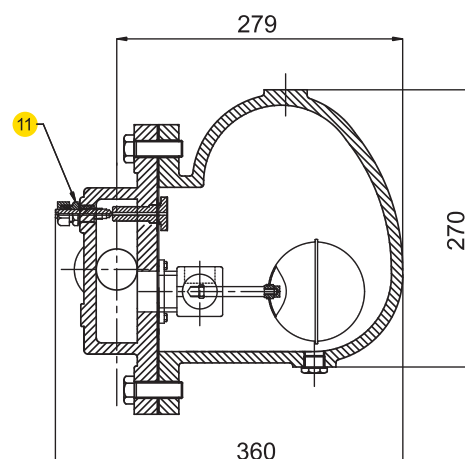
AVAILABLE SPARES:

The Housing Assly., Air Vent Assly., Gaskets

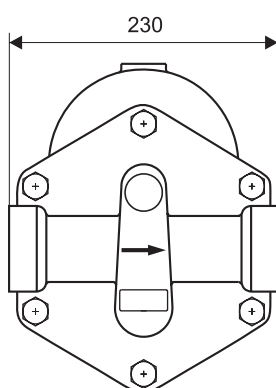
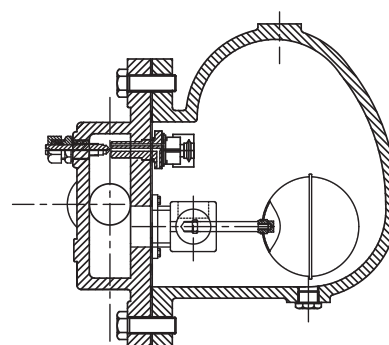
PT65H - Rotary Orifice



PT65H-S - Rotary Orifice



PT65H-C - Rotary Orifice



DIMENSIONS - Nominal in mm

Local regulations may restrict the use of this product below the conditions quoted. Limiting conditions refer to standard connections only. In the interest of development and improvement of the product, we reserve the right to change the specifications without prior notice.

All Dimensions are in mm. weights in kg.