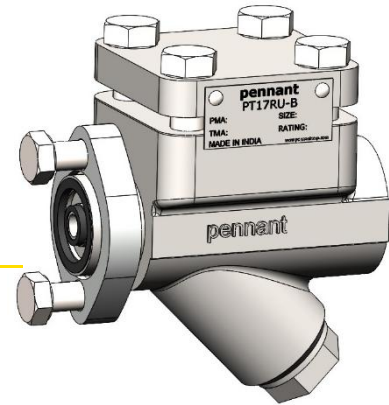


PT17RU-B

THERMODYNAMIC STEAM TRAP WITH UNIVERSAL CONNECTION



DESCRIPTION:

Thermodynamic Steam trap having strainer & Complete replaceable working parts (disc & seat) facilitating economical & easy maintenance.

Lapped disc and seat provide a steam tight seal, withstanding continuous and prolonged operation. Condensate entry below the disc ensures a clean parallel lift of the disc with reference to the seat, eliminating localized wear & tear. Ideal for fluctuating loads and pressures.

SIZES: Universal Connection

INSTALLATION:

This trap operates in any position but preferred installation is in horizontal plane with disc & cap on top. Isolation valves should be opened slowly until normal operating conditions are achieved to avoid system shocks.

MAINTENANCE:

The trap can be maintained inline without disturbing piping connections when fitted with Compact Module/Universal Connector. Ensure that trap is isolated- Upstream & downstream side before attempting to dismantle it.

Allow the trap to cool & depressurize before dismantling. For trouble-free performance, periodic cleaning of the disc and seat is recommended. Only the disc & seat are subjected to wear. A worn Disc & seat should be replaced, as a set along with gaskets.

IMPORTANT:

The Trap should be installed as close to the drain point as possible. For new installation system should be flushed prior to installation.

LIMITING CONDITIONS:

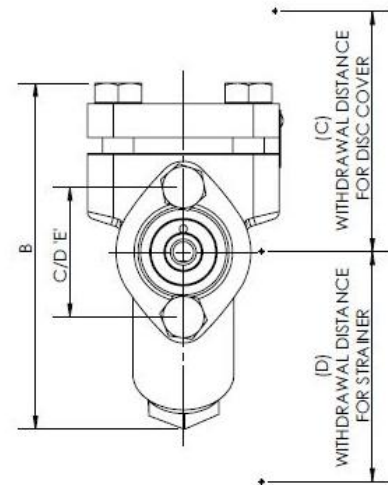
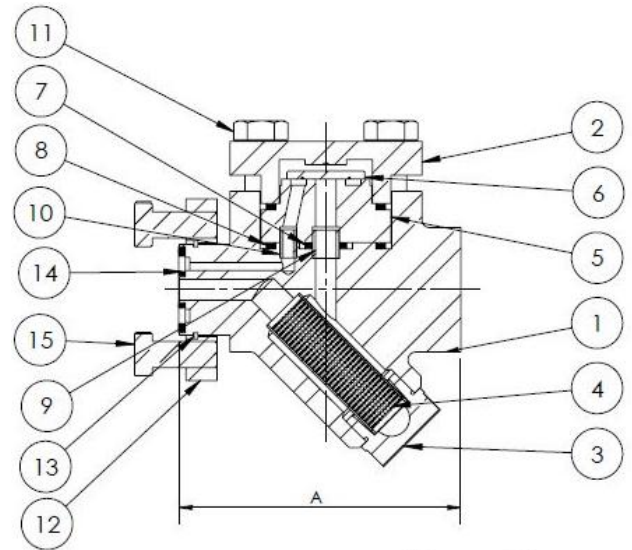
PMA: Max. Allowable Pressure	88.7 bar(g) @ RT
TMA: Max. Allowable Temperature	425° C
PMO: Max. Operating Pressure	50 bar(g)
TMO: Max. Operating Temperature	425° C
Cold Hydro Test Pressure	133 bar (g)
Max. Diff. Pressure for Satisfactory Operation	0.25 bar
Maximum operating back pressure at the outlet should not exceed 80% of the inlet pressure.	

DIMENSIONS:

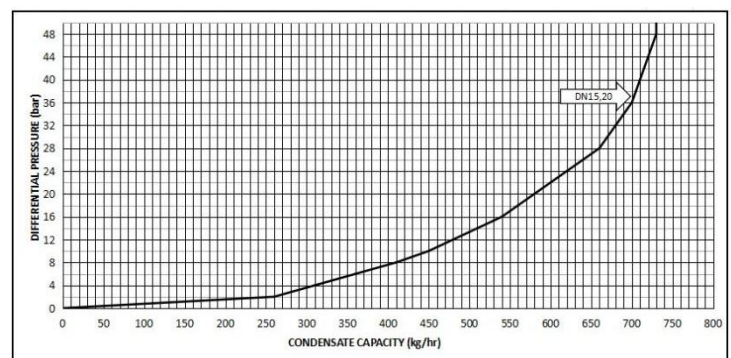
MODEL	A	B	C	D	E	WEIGHT (Kg)
PT17RU-B	102	134	100	108	51	2.9

MATERIAL:

SR. NO	PART NAME	MATERIAL	QTY
1	BODY	ASTM A105	01
2	COVER	ASTM A105	01
3	STRAINER CAP	ASTM A743 Gr. CA40	01
4	STRAINER SCREEN	AISI 304 (φ0.8 PERF.)	01
5	DISC SEAT (Hardened)	AISI 420	01
6	DISC (Hardened)	AISI 420	01
7	GASKET	Spiral Wound	01
8	GASKET	AISI304 Graphite Filler	02
9	LOCATOR	AISI 304	01
10	TUBE	AISI 304	01
11	BOLTS	ASTM A193 Gr. B7	04
12	CONNECTOR FLANGE	ASTM A743 Gr.CA40	01
13	RETAINER RING	STAINLESS STEEL	01
14	CONNECTOR GASKET	GRAPHITE WITH SS REINFORCEMENT	02
15	BOLT-CONNECTOR 3/8 - 16 UNC	SS 304	02



DISCHARGE CAPACITY:



AVAILABLE SPARES:

Disc, Disc Seat, set of gaskets, Strainer Screen(Packet of 5), Blow Down Valve.

HOW TO ORDER:

PT17RU-B NIBR

ORDERING INFORMATION:

- 1) Inlet Pressure in bar(g)
- 2) Back Pressure in bar(g)
- 3) Model
- 4) IBR/NIBR

Local regulations may restrict the use of this product below the conditions quoted. Limiting conditions refer to standard connections only. In the interest of development and improvement of the product, we reserve the right to change the specifications without prior notice.

All dimensions are in mm. weights in kg.