

PFSPR

FABRICATED SEPARATOR

DESCRIPTION:

Moisture Separator is used to improve the quality of steam or compressed air. As steam or compressed air enters in to the separator, a series of internal baffles separate moisture from the media. Liquid droplets falls below due to gravity which needs to be drained by steam trap or Drain trap.

SIZES:

DN15,20,25,40,50,65,80,100,125, 150, 200, 250 & 300

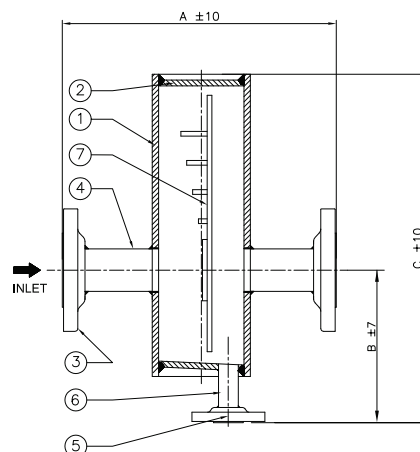
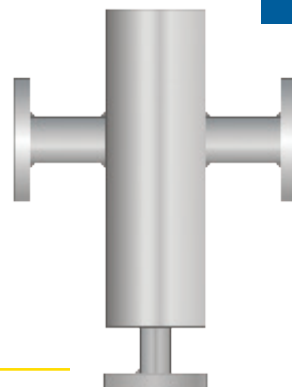
Note: Available with IBR test certificates, on request.

LIMITING CONDITIONS:

Flange types	Max. Working Pressure	Max Working Temperature
#150	19.6 bar(g) at 38 °C	425 °C at 5.5 bar(g)
#300	42 bar(g) at 250 °C	425 °C at 28.8 bar(g)

BILL OF MATERIAL:

NO.	PART	MATERIAL	QTY.
1.	BODY	ASTM A106 Gr B	01
2.	END PLATE	ASTM A516 Gr.70	02
3.	INLET / OUTLET FLANGE	ASTM A105	02
4.	INLET / OUTLET PIPE	ASTM A106 Gr. B	02
5.	DRAIN FLANGE	ASTM A105	01
6.	DRAIN PIPE	ASTM A106 Gr. B	01
7.	BAFFEL PLATE	ASTM A516 Gr. 70	01



INSTALLATION:

The Separator should be fitted with the Inlet & Outlet connections horizontally in line according to flow direction arrow marked on body. Drain should be pointed downwards, The steam trap or drain trap is required to be installed at drain point.

DIMENSIONS: (approx.) in mm:

Sizes DN	A	B	C	D	E Nominal
15	216	203	100	80	15
20	241	203	143	80	15
25	368	295	149	100	25
40	318	276	149	100	25
50	470	355	222	150	25
65	470	387	225	150	25
80	470	477	238	150	25
100	575	515	279	200	25
125	673	619	346	250	25
150	749	775	394	300	25
200	870	841	517	400	25
250	900	912	610	400	25
300	929	960	660	450	25

HOW TO ORDER:

Example – 1 no. | Pennant Moisture Separator
Fabricated (Model name) | Flanged #150 | IBR

Local regulations may restrict the use of this product below the conditions quoted. Limiting conditions refer to standard connections only. In the interest of development and improvement of the product, we reserve the right to change the specifications without prior notice.