

PT62U

FLOAT & THERMOSTATIC STEAM TRAPS WITH UNIVERSAL CONNECTION

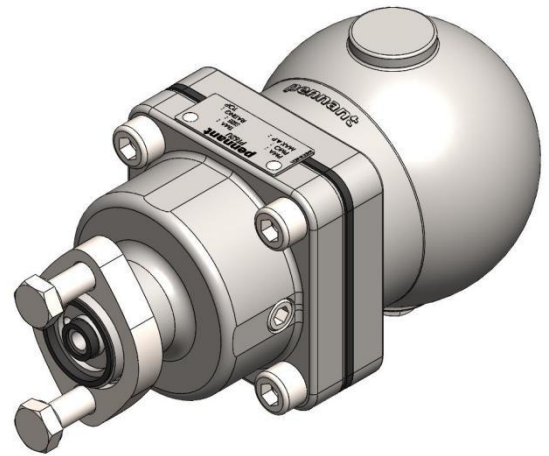
DESCRIPTION:

PT62U float and thermostatic (internal air vent) steam traps are designed for draining condensate from all types of low and medium pressure steam heating and process equipment.

SIZES: UNIVERSAL END CONNECTION

FEATURES:

Modulating discharge. Discharges condensate at steam temperature. Excellent air venting (by thermostatic air vent).



LIMITING CONDITIONS:

| | |
|--------------------------------|------------|
| PMA: Max Allowable Pressure | 250 psi(g) |
| TMA: Max Allowable Temperature | 425 °F |
| PMO: Max Operating Pressure | 200 psi(g) |
| TMO: Max Operating Temperature | 425 °F |
| Cold Hydro Test Pressure | 345 psi(g) |

INSTALLATION:

Installation with drain plug facing downwards. The trap should be installed below the drain point of the equipment in a position such that the float arm is in a horizontal plane and the float rises and falls vertically. The word 'TOP' on the nameplate indicates the top side of the trap.

Max. differential pressure range:

PT62U - 65 : 65 psi

PT62U - 145 : 145 psi

PT62U - 200 : 200 psi

MAINTENANCE:

The trap can be maintained inline without disturbing piping connections when fitted with Compact Module. Ensure that trap is isolated- Upstream & downstream side before attempting to dismantle it.

Allow the trap to cool & depressurize before dismantling.

AVAILABLE SPARES:

Valve Seat, Ball Float & Lever Assly., Airvent Assly., Gaskets.

TRAP DISCHARGE CAPACITY IN lbs/hr

| | DIFFERENTIAL PRESSURE (psi) | | | | | | | | | | | | | | | | |
|-------------------|-----------------------------|-----|------|------|------|------|------|-----|-----|-----|-----|-----|-----|-----|-----|------|------|
| | 7 | 15 | 21.5 | 28.5 | 42.5 | 57 | 65 | 70 | 85 | 100 | 115 | 128 | 145 | 157 | 170 | 185 | 200 |
| PT62U- 65 | 440 | 616 | 705 | 770 | 880 | 1000 | 1090 | - | - | - | - | - | - | - | - | - | - |
| PT62U- 145 | 297 | 330 | 365 | 396 | 462 | 530 | 560 | 615 | 660 | 770 | 860 | 890 | 925 | - | - | - | - |
| PT62U- 200 | 275 | 308 | 330 | 363 | 418 | 485 | 506 | 540 | 595 | 650 | 715 | 770 | 825 | 890 | 946 | 1000 | 1060 |

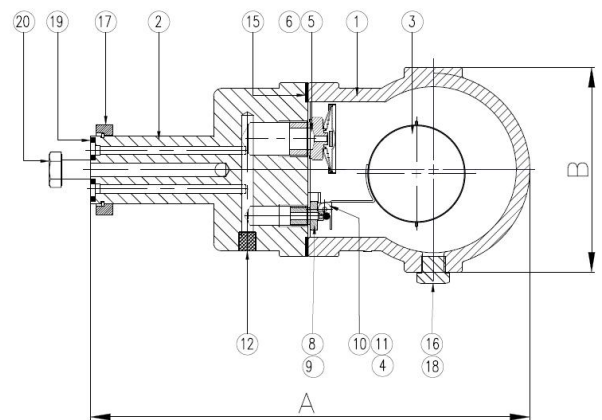
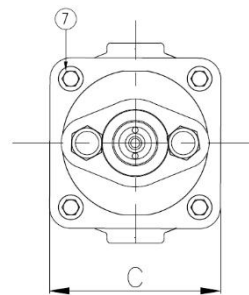
DIMENSIONS:

| MODEL | A | B | C | WEIGHT (lbs) |
|--------------|-----|-----|-----|--------------|
| PT62U | 7.8 | 4.1 | 3.5 | 11 |

MATERIAL:

| Sr. No. | DESCRIPTION | MATERIAL | QTY |
|---------|-----------------------------------|--------------------------------|-----|
| 1 | BODY | ASTM A216 Gr. WCB | 1 |
| 2 | COVER | ASTM A105 / CS | 1 |
| 3 | FLOAT ASSLY | AISI 304 | 1 |
| 4 | LEVER ASSLY | AISI 304 | 1 |
| 5 | AIR VENT | AISI 304 | 1 |
| 6 | AIR VENT GASKET | COPPER | 1 |
| 7 | BOLT | ASTM A193 Gr. B7 | 4 |
| 8 | VALVE SEAT | AISI 420 | 1 |
| 9 | VALVE SEAT GASKET | COPPER | 1 |
| 10 | BRACKET | AISI 304 | 1 |
| 11 | BRACKET PIN | AISI 304 | 1 |
| 12 | SOCKET HEAD PLUG | CS | 2 |
| 13 | INT. SCREEN ASSEMBLY (NOT SHOWN)* | AISI 304 | 1 |
| 14 | LABEL (NOT SHOWN) | AISI 304 | 1 |
| 15 | COVER GASKET | GRAPHITE WITH SS REINFORCEMENT | 1 |
| 16 | DRAIN PLUG | CS | 1 |
| 17 | UNIVERSAL FLANGE | ASTM A743 Gr. CA40 | 1 |
| 18 | DRAIN PLUG GASKET | COPPER | 1 |
| 19 | GASKET | GRAPHITE WITH SS REINFORCEMENT | 2 |
| 20 | BOLT- CONNECTOR 3/8-16 UNC | SS | 2 |

* Optional- with Strainer screen Assly



ORDERING INFORMATION:

- 1) Inlet Pressure in psi(g)
- 2) Back Pressure in psi(g)
- 3) Operating Temperature in °F
- 4) Condensate Load in lbs/hr
- 5) Model

Local regulations may restrict the use of this product below the conditions quoted. Limiting conditions refer to standard connections only. In the interest of development and improvement of the product, we reserve the right to change the specifications without prior notice.

All Dimensions are in inches. Weight lbs.