

# PT14BM

## HIGH PRESSURE #2500 BIMETTALIC STEAM TRAP



### DESCRIPTION:

PT14BM high pressure thermostatic steam trap is made of forged body with bimetallic controller assembly, inbuilt strainer and stainless-steel internals. Best suited for high pressure steam trace lines, header drip legs, heating coils and various process and heating applications.

### FEATURES:

- Excellent resistance to water hammer.
- Tight Shut-off, No Steam Loss.
- Easy Maintenance – No Need of removing trap from the piping system to clean/ replace internals.
- Long lasting modulating discharge. Excellent air venting capacity.

**SIZES:** NPS 1/2", 3/4" ,1"

**CONNECTIONS:** Socket Weld/ Butt Weld/Flanged

\*End Connection Flanges of ASTM A182 Gr. F304 forged carbon steel are welded on.

### LIMITING CONDITIONS:

PMA: Max. Allowable Pressure	6249.67 psi @100°F
TMA: Max. Allowable Temperature	1049°F @ 1508 psi
PMO: Max. Operating Pressure	2030.5 psi @ 1013°F
TMO: Max. Operating Temperature	1013°F @ 203
Cold Hydro test pressure	9375 psi

### INSTALLATION:

Trap should be installed in a horizontal Plane with cover on top, and below drain point. Full port isolation valves should be installed 1 meter minimum upstream & downstream of the trap.

### IMPORTANT:

The trap should be installed as close as possible to the equipment to be drained.

For new Pipelines, ensure that the lines are properly flushed, prior to the fitting of the trap to avoid strainer choke up

To prevent water logging, it is required that the line be drained by using the bypass, at start-up.

### AVAILABLE SPARES:

Bimetallic Controller Assembly, Insert, gaskets.

**HOW TO ORDER:** PT14BM DN15 SW.

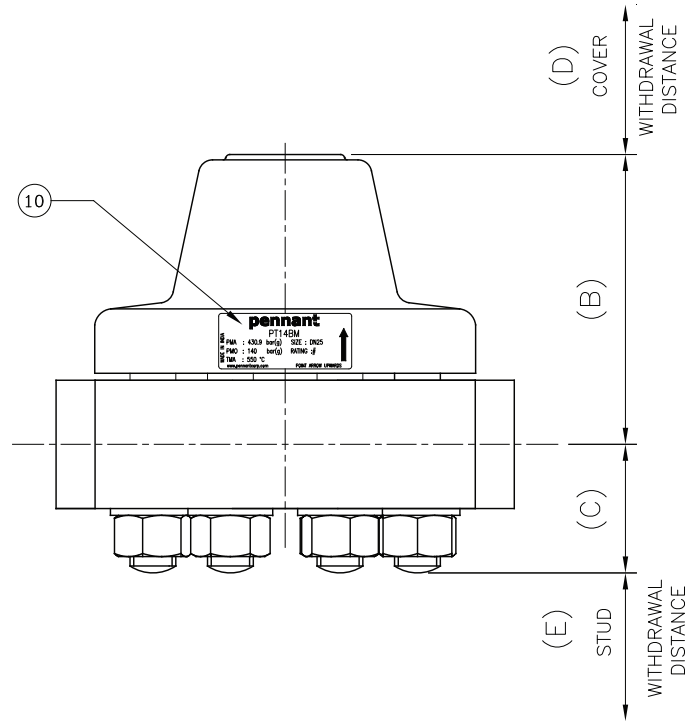
### ORDERING INFORMATION:

1. Inlet pressure in psi(g).
2. Back pressure in psi(g).
3. Operating temperature in °F.
4. Size & End Connection
5. Condensate Load in lbs/hr.

Local regulations may restrict the use of this product below the conditions quoted. Limiting conditions refer to standard connections only. In the interest of development and improvement of the product, we reserve the right to change the specifications without prior notice.

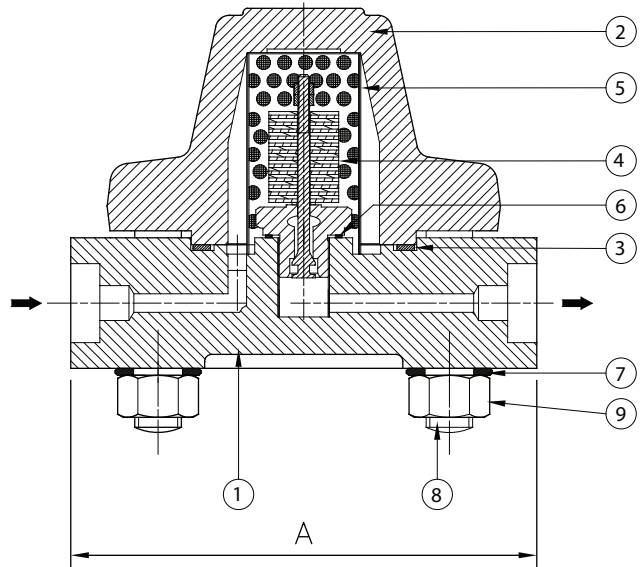
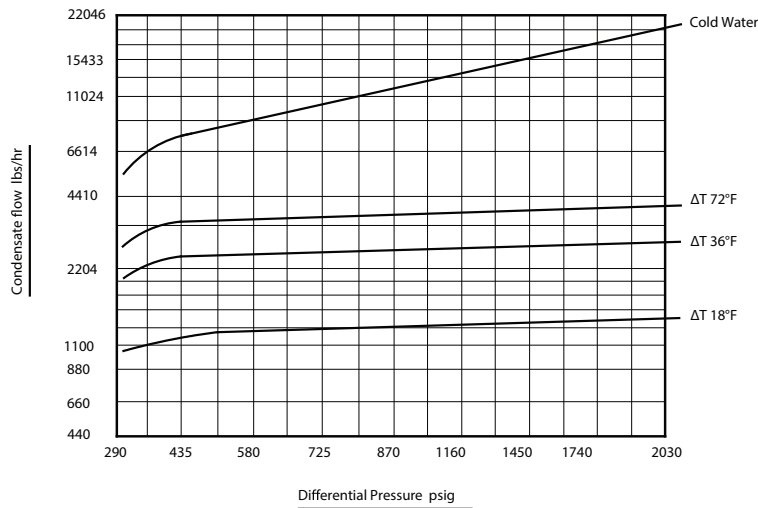
**BILL OF MATERIAL:**

NO	PART NAME	MATERIAL	QTY
1	BODY	ASTM A182 GR. F22 CL3	1
2	COVER	ASTM A182 GR. F22 CL3	1
3	COVER GASKET	SPIRAL WOUND GASKET WITH GRAPHITE AISI304	1
4	CONTROLLER ASSLY	BIMETAL	1
5	STRAINER SCREEN	AISI 304 40 Mesh ø6 Perforation	1
6	CONTROLLER ASSLY GASKET	AISI 304	1
7	WASHER	45C8	8
8	STUDS	ASTM A193 GR. B16	8
9	NUTS	ASTM A194 GR. B7	8
10	LABEL	AISI 304	1



**DIMENSIONS:** Nominal in inches.

MODEL	SIZE	A	B	C	D	E	WEIGHT
PT14BM	DN15-25	7.87	4.96	2.20	3.94	3.94	34 lbs



Local regulations may restrict the use of this product below the conditions quoted. Limiting conditions refer to standard connections only. In the interest of development and improvement of the product, we reserve the right to change the specifications without prior notice.