

PS11

#2500 HIGH PRESSURE FORGED Y-TYPE STRAINER

DESCRIPTION:

Forged Y strainers with bolted cover for high pressure steam, water, and process fluids. All strainers have a large flow area around the screen, to reduce pressure drop, and the screens have and the screens have a filtration area 3 times of the pipe's cross-sectional area.

SCREEN:

40 mesh (standard)

***Contact our sales representative for special mesh requirement.**

FEATURES:

- i. Designed to remove solid particles
- ii. Reduces contamination in the pipeline network

SIZES: NPS 1½", 2"

LIMITING CONDITIONS:

| FLANGE CLASS | DESIGN CONDITION | HYDRO TEST PRESSURE |
|--------------|--------------------------------------|---------------------|
| #2500 | 6250 psi @ RT, 2230 psi @ 1000° F | 9375 psi(g) |

MATERIAL:

| NO | PART NAME | MATERIAL | QTY |
|----|-----------------|--|-----|
| 1 | BODY | ASTM A182 GR. F22 CL3* | 01 |
| 2 | COVER | ASTM A182 GR. F22 CL3* | 01 |
| 3 | STRAINER SCREEN | AISI 304 (40 MESH) & Φ 6 PERF | 01 |
| 4 | GASKET | SPIRAL WOUND SS 304 WITH GRAPHITE FILLER | 01 |
| 5 | STUD | ASTM A193 Gr. B16 | 04 |
| 6 | NUT | ASTM A194 Gr. 7 | 04 |
| 7 | WASHER | 45C8 | 04 |

* Also available in A105 material



INSTALLATION:

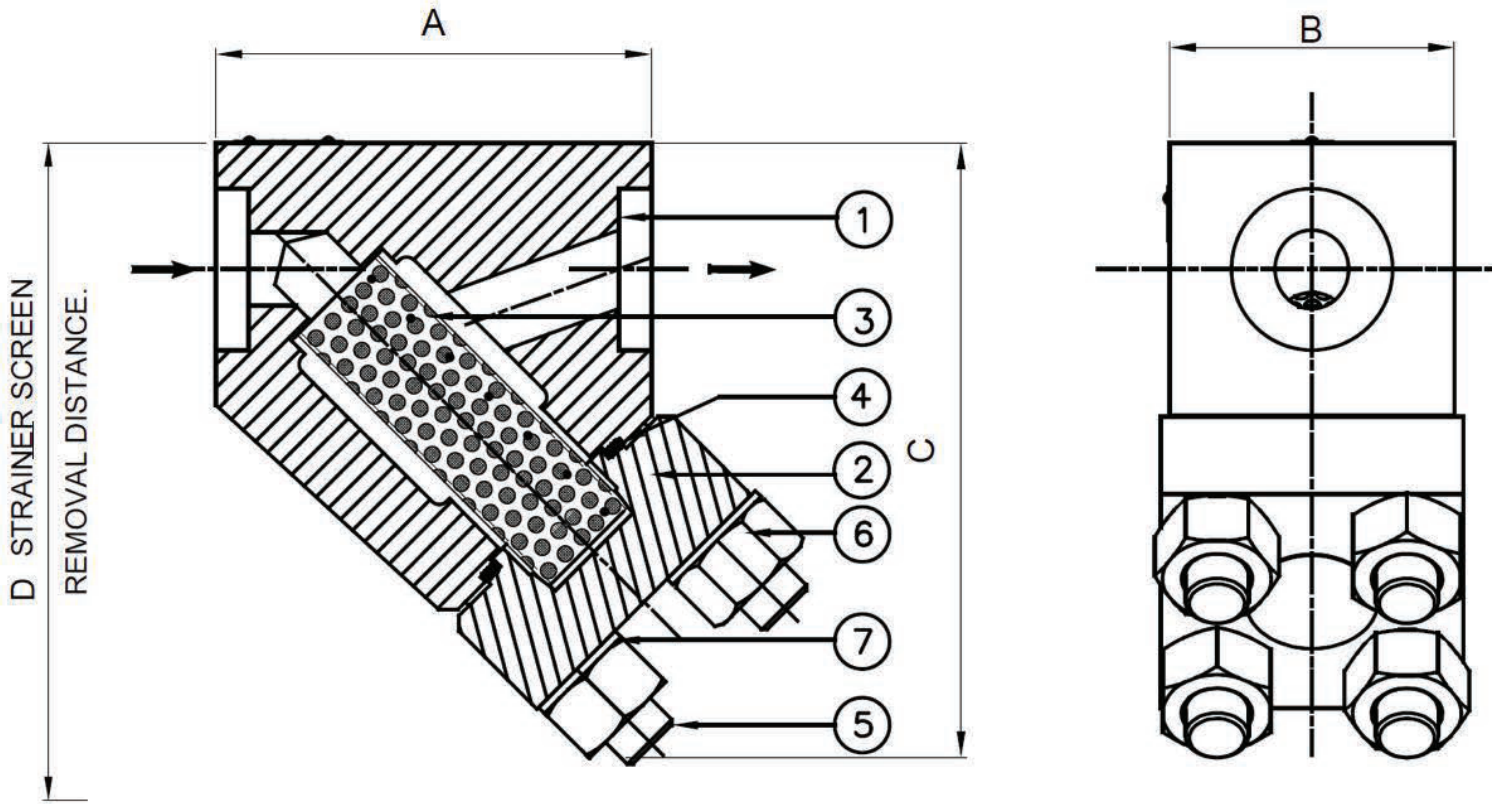
Strainer should be installed in the direction of flow as shown in the label attached on the body. Maintenance can be completed with the strainer in the pipeline.

Suitable isolation valves must be installed prior to the strainer to allow for safe maintenance.

Periodically the strainer screen should be thoroughly cleaned for better performance and life. With isolated strainer dismantle the bolted joint and remove strainer screen to remove muck and clean the screen thoroughly. Fit the screen carefully and fit cover with new gasket. Tighten nuts uniformly.

DIMENSIONS: (approx.) in inches

| SIZE | A | B | C | D | WEIGHT (lbs) |
|------|------|------|------|-------|--------------|
| 1½" | 5.31 | 6.85 | 8.11 | 10.63 | 36.26 |
| 2" | 6.49 | 7.44 | 9.17 | 11.8 | 48.5 |



AVAILABLE SPARES:

Strainer Screen, Gasket

HOW TO ORDER:

PS11 1½" #2500 SW