

PD65

LIQUID DRAIN TRAPS (CAST IRON)



DESCRIPTION:

PD65 float traps are designed to drain moisture/liquids from compressed air/gas systems.

FEATURES:

Modulating discharge.

USE:

Compressed air and non-corrosive gas compatible with the construction.

SIZES: NPS 1½", 2"

CONNECTIONS: Screwed (NPT/BSPT/BSP)

LIMITING CONDITIONS:

PMA: Max. allowable pressure	250 psig
TMA: Max. allowable temperature	425 °F
PMO: Max. operating pressure	200 psig
TMO: Max. operating temperature	425 °F
Cold hydro test pressure	350 psig

INSTALLATION:

"Horizontal Installation with flow from left to right. The trap should be installed horizontally below the drain point of the equipment in a position such that the float arm is in horizontal plane and the float rises and falls vertically, with flow direction as indicated on the cover.

The arrow on the nameplate should be pointing vertically upwards. It is recommended that an equalizer line to be fitted as shown in the installation manual for the product. Max. differential pressure range:-

PD65 - 65: 65 psi

PD65 - 145: 145 psi

PD65 - 200: 200 psi

TRAP DISCHARGE CAPACITY IN Lbs/Hr (COLD WATER)

MODEL	TRAP SIZE	DIFFERENTIAL PRESSURE (psi)																
		7	15	21.5	29	43.5	58	65	72.5	88	100	115	130	145	158	175	185	200
PD65-65	1½", 2"	8644	9359	10069	10831	12285	13715	14461	-	-	-	-	-	-	-	-	-	-
PD65-145	1½", 2"	6389	7676	8142	8351	8857	9544	9772	10085	10582	11526	12595	13699	14641	-	-	-	-
PD65-200	1½", 2"	5559	6486	7258	7942	8501	8857	9084	9297	9629	10353	11117	11799	12487	13116	13715	14282	14843

MATERIAL:

NO.	PART	MATERIAL	QTY. (Nos.)
1.	BODY	CAST IRON	01
2.	COVER	CAST IRON	01
3.	COVER GASKET	Non CAF	01
4.	VALVE SEAT	AISI 420 /ASTM A743 Gr. CA40	01
5.	FLOAT ASSLY	AISI 304	01
6.	PLUG	AISI 304	01
7.	BOLT	HIGH TENSILE	06
8.	DRAIN PLUG	CARBON STEEL	01
9.	BRACKET ASSLY	AISI 304	01

WEIGHTS: 64 lbs

AVAILABLE SPARES:

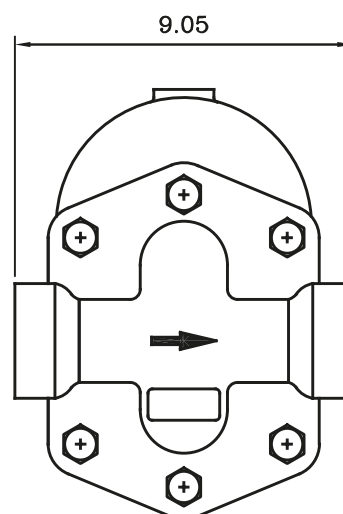
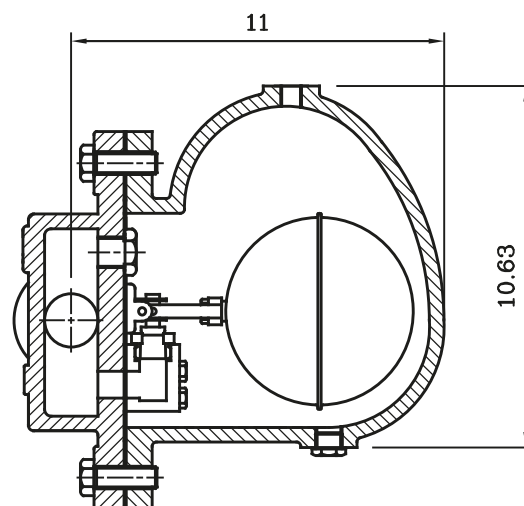
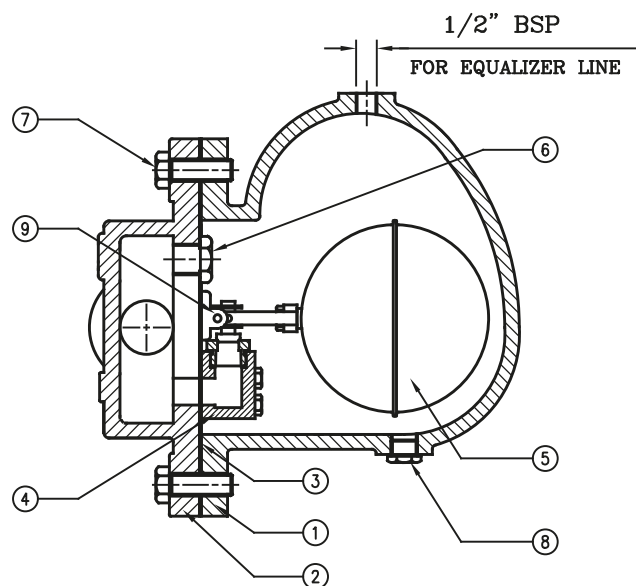
Valve Seat, Ball Float & Lever Assly., Gaskets.

ORDERING INFORMATION:

Refer 'How to Order' page.

CAUTION:

DO NOT USE FOR HAZARDOUS/POISONOUS MEDIA



DIMENSIONS - Nominal in inches