

PT62HP

FLOAT & THERMOSTATIC STEAM TRAPS - 1/2", 3/4", 1"



DESCRIPTION:

PT62 float and thermostatic (internal air vent) steam traps are designed for draining condensate from all types of low and medium pressure steam heating and process equipment. Typical applications include unit heaters, heat exchangers, driers and jacketed vessels. Horizontal installation.

AVAILABLE TYPES:

PT 62HP - with thermostatic air vent
PT 62HP S - SLR (with steam lock release)

FEATURES:

Modulating discharge.
Discharges condensate at steam temperature.
Excellent air venting (by thermostatic air vent).

USE:

Saturated and superheated steam

SIZES:

NPS 1/2, 3/4, 1

CONNECTIONS: Screwed (NPT/BSPT/BSP)
Flanged/Socket Weld

*End connection flanges of ASTM A105 forged carbon steel are welded on

LIMITING CONDITIONS:

PMA: Max. allowable pressure	450 psig
TMA: Max. allowable temperature	750 °F
PMO: Max. operating pressure	350 psig
TMO: Max. operating temperature	Sat.
Body shell design rating	600@RT
Cold hydro test pressure	675 psig

INSTALLATION:

Horizontal installation with flow from left to right.

The trap should be installed horizontally below the drain point of the equipment in a position such that the float arm is in a horizontal plane and the float rises and falls vertically, with the flow direction as indicated on the cover.

The word 'TOP' on the nameplate indicates the top side of the trap.

Max. differential pressure range:

PT62 - 65 : 65 psi
PT62 - 145: 145 psi
PT62 - 200: 200 psi
PT62 - 350: 350 psi

TRAP DISCHARGE CAPACITY IN lbs/hr

MODEL	TRAP SIZE	DIFFERENTIAL PRESSURE (psi)												
		7	15	28.5	42.5	65	100	125	145	175	200	250	300	350
PT62 - 65	1/2" ~ 1"	1850	2080	2540	2990	3685	-	-	-	-	-	-	-	-
PT62-145	1/2" ~ 1"	1330	1440	1670	1915	2255	2840	3300	3540	-	-	-	-	-
PT62-200	1/2" ~ 1"	935	1000	1120	1245	1420	1725	1970	2090	2400	2585	-	-	-
PT62-350	1/2" ~ 1"	450	615	770	880	1000	1050	1090	1150	1175	1200	1230	1255	1275

Recommended safety factor: steady condns. 1.5 - 2; fluctuating condns. 2-3

MATERIAL:

NO.	PART	MATERIAL	QTY. (Nos.)
1.	BODY	ASTM A216 Gr. WCB	01
2.	COVER	ASTM A216 Gr. WCB	01
3.	GASKET	NON CAF	01
4.	VALVE SEAT	AISI 410/420	01
5.	BALL FLOAT & LEVER ASSY.	AISI 304	01
6.	AIR VENT	STAINLESS STEEL	01
7.	BOLT	ASTM A193 Gr. B7	04
8.	DRAIN PLUG	CARBON STEEL	01
9.	BRACKET ASSY.	AISI 304	01
10.	GASKET	COPPER	01
11.	SLR UNIT	AISI 304	01

DIMENSIONS: Nominal in inches

SIZE	A	B	C	D	E	F - Flanged	
						#150	#300
1/2"	4.75	7.35	6.70	4.35	8.65	7.70	8.10
3/4"	4.75	7.35	6.70	4.35	8.65	7.90	8.25
1"	4.75	7.35	6.70	4.35	8.65	8.25	8.65

WEIGHTS: approx. in lbs

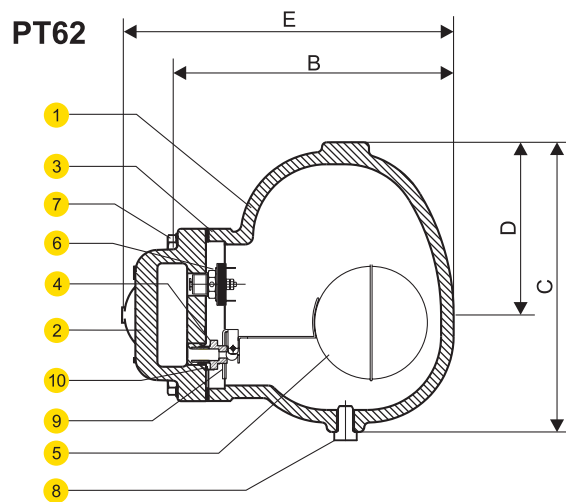
SIZE	SCREWED/ SW ENDS	F - Flanged	
		#150	#300
1/2"	17.6	24.2	25.3
3/4"	17.6	26.0	27.5
1"	17.6	26.3	28.8

AVAILABLE SPARES:

Valve Seat, Ball Float & Lever Assly.,
Air Vent Assly., Gaskets

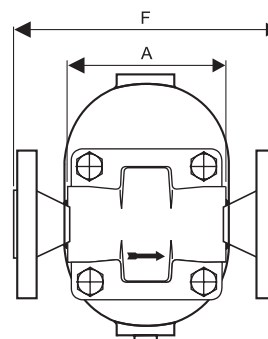
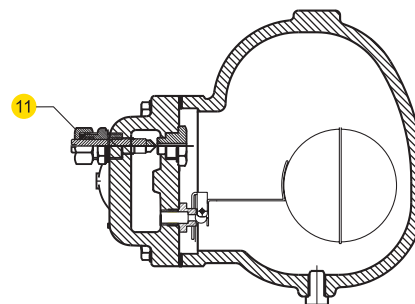
ORDERING INFORMATION:

Refer 'How to Order' page.



PT62S

STEAM LOCK
RELEASE (SLR)



PT62HP

FLOAT & THERMOSTATIC STEAM TRAPS - 1½", 2"



DESCRIPTION:

PT62 float and thermostatic (internal air vent) steam traps are designed for draining condensate from all types of low and medium pressure steam heating and process equipment. Typical applications include unit heaters, heat exchangers, driers and jacketed vessels. Horizontal installation.

AVAILABLE TYPES:

PT 62HP - with thermostatic air vent
PT 62HP S - SLR (with steam lock release)
PT 62HP C - with thermostatic air vent and SLR

FEATURES:

Modulating discharge.
Discharges condensate at steam temperature.
Excellent air venting (by thermostatic air vent).

USE: Saturated and superheated steam

SIZES: NPS 1½, 2

CONNECTIONS: Screwed (NPT/BSPT/BSP)
Flanged/Socket Weld

* End connection flanges of ASTM A105
forged carbon steel are welded on.

LIMITING CONDITIONS:

PMA: Max. allowable pressure	450 psig
TMA: Max. allowable temperature	800 °F
PMO: Max. operating pressure	350 psig
TMO: Max. operating temperature	Sat.
Body shell design rating	600@RT
Cold hydro test pressure	675 psig

INSTALLATION:

Horizontal installation with flow from left to right.

The trap should be installed horizontally below the drain point of the equipment in a position such that the float arm is in a horizontal plane and the float rises and falls vertically, with the flow direction as indicated on the cover.

The arrow on the nameplate should be pointing vertically upwards.

Max. differential pressure range:

PT62 - 65 : 65 psi
PT62 - 145: 145 psi
PT62 - 200: 200 psi
PT62 - 350: 350 psi

TRAP DISCHARGE CAPACITY IN lbs/hr

MODEL	TRAP SIZE	DIFFERENTIAL PRESSURE (psi)												
		7	15	28.5	42.5	65	100	125	145	175	200	250	300	350
PT62-65	1½"~2"	6655	7205	8340	9460	11135	-	-	-	-	-	-	-	-
PT62-145	1½"~2"	4920	5910	6430	6820	7525	8875	10550	11275	-	-	-	-	-
PT62-200	1½"~2"	4280	4995	6115	6545	6995	7975	9085	9615	10625	11430	-	-	-
PT62-350	1½"~2"	3390	3920	4910	5240	5615	5890	7490	7905	8985	9425	11420	12380	12775

Recommended safety factor: steady condns. 1.5 - 2; fluctuating condns. 2-3

MATERIAL:

NO.	PART	MATERIAL	QTY. (Nos.)
1.	BODY	ASTM A216 Gr. WCB	01
2.	COVER	ASTM A216 Gr. WCB	01
3.	GASKET	NON CAF	01
4.	VALVE SEAT	AISI 420 / ASTM A743 Gr. CA40	01
5.	BALL FLOAT & LEVER ASSY.	AISI 304	01
6.	AIR VENT	STAINLESS STEEL	01
7.	BOLT	ASTM A193 Gr. B7	06
8.	DRAIN PLUG	CARBON STEEL	01
9.	BRACKET ASSY.	AISI 304	01
10.	SLR UNIT	AISI 304	01

DIMENSIONS: Nominal in inches

SIZE	A		
	SCR/SW	#150	#300
1½"	9.92	13.93	14.48
2"	9.92	13.77	14.29

WEIGHTS:

SCREWED/SW	FLANGED
68 lbs	77 lbs

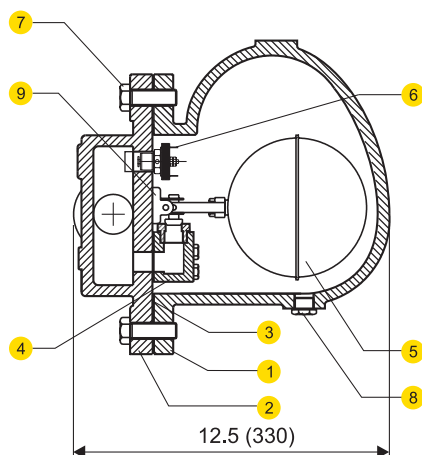
AVAILABLE SPARES:

Valve Seat, Ball Float & Lever Assly., Air Vent Assly., Gaskets

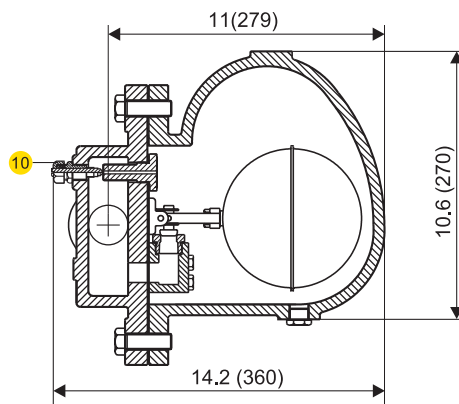
ORDERING INFORMATION:

Refer 'How to Order' page.

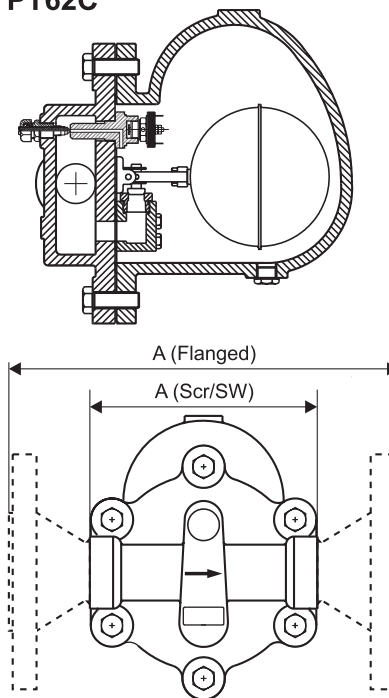
PT62



PT62S



PT62C



DIMENSIONS - Nominal in inches

Local regulations may restrict the use of this product below the conditions quoted. Limiting conditions refer to standard connections only. In the interest of development and improvement of the product, we reserve the right to change the specifications without prior notice.