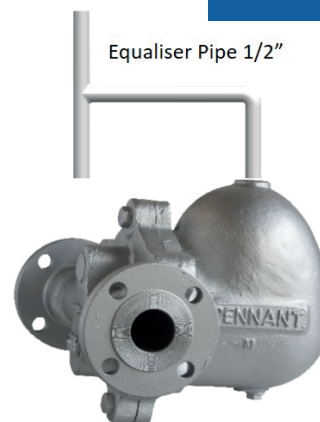


# PD62

## LIQUID DRAIN TRAPS 1.5", 2"



### DESCRIPTION:

PD62 float liquid drain traps are designed to drain moisture/liquids from compressed air/gas systems.

### FEATURES:

Modulating discharge.

**USE:** Compressed air and non-corrosive gas compatible with the construction

**SIZES:** NPS 1.5", 2"

**CONNECTIONS:** Screwed (NPT/BSPT/BSP)  
Socket Weld/Flanged

\*End connection flanges of ASTM A105 forged carbon steel are welded on.

### LIMITING CONDITIONS:

PMA: Max. allowable pressure	250 psig
TMA: Max. allowable temperature	425 °F
PMO: Max. operating pressure	200 psig
TMO: Max. operating temperature	425 °F
Cold hydro test pressure	375 psig

### INSTALLATION:

Horizontal installation with flow from left to right. The trap should be installed below the drain point of the equipment with the flow direction as indicated by the arrow on the trap. It is recommended that an equalizer line be fitted as shown in the installation manual for this product.

Max. differential pressure range:

PD62-65 : 65 psi

PD62-145 : 145 psi

PD62-200 : 200 psi

### CAUTION:

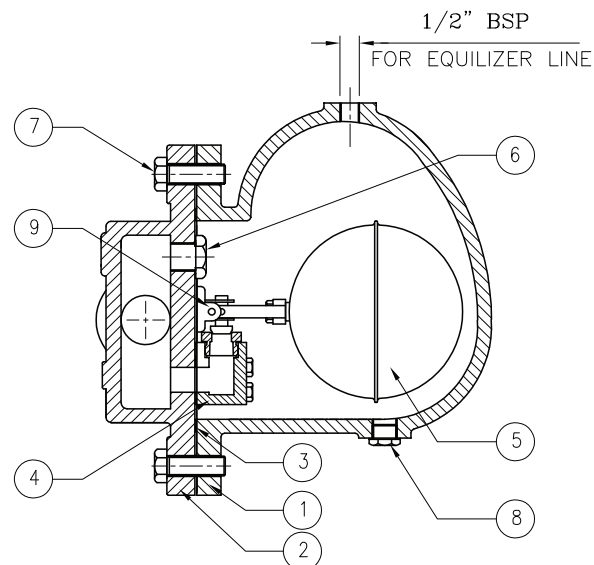
DO NOT USE FOR HAZARDOUS/POISONOUS MEDIA

### DISCHARGE CAPACITY IN lbs/hr (COLD WATER)

MODEL	SIZE	DIFFERENTIAL PRESSURE (psi)																
		7	15	21	28.5	42.5	57	65	70	85	100	115	128	145	157	170	185	200
PD62-4.5	DN40,50	8661	9378	10091	10854	12309	13742	14491	-	-	-	-	-	-	-	-	-	-
PD62-10	DN40,50	6403	7692	8160	8369	8876	9564	9793	10106	10604	11550	12622	13728	14671	-	-	-	-
PD62-14	DN40,50	5572	6500	7274	7959	8518	8876	9102	9317	9650	10375	11140	11822	12513	13144	13742	14313	14875

## MATERIAL:

NO.	PART	MATERIAL	QTY. (Nos.)
1	BODY	ASTM A216 GR. WCB	1
2	COVER	ASTM A216 GR. WCB	1
3	COVER GASKET	GRAPHITE WITH SS REINFORCEMENT	1
4	VALVE SEAT	AISI 420	1
5	FLOAT ASSLY	AISI 304	1
6	PLUG	AISI 304	1
7	BOLTS	ASTM A193 GR. B7	6
8	DRAIN PLUG	CARBON STEEL	1
9	BRACKET ASSLY	AISI 304	1



## WEIGHTS: approx. in lbs

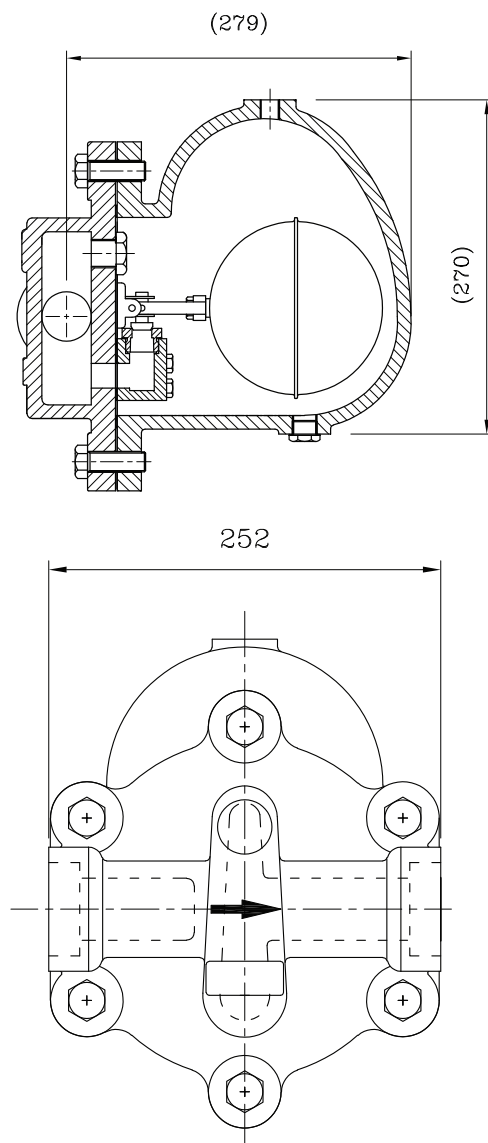
SIZE	SCREWED / SW	FLANGED
DN40, 50	68 lbs	77 lbs

## AVAILABLE SPARES:

Valve Seat, Ball Float & Lever Assly., Gaskets.

## ORDERING INFORMATION:

Refer to 'How to Order' page.



Local regulations may restrict the use of this product below the conditions quoted. Limiting conditions refer to standard connections only. In the interest of development and improvement of the product, we reserve the right to change the specifications without prior notice.