

# PAE61

## FLOAT TYPE AIR ELIMINATOR DN15, DN20



### DESCRIPTION:

PAE61 ball float air eliminator is designed to automatically discharge air/gas present in liquid systems without loss of liquid.

**SIZES:** DN15, 20

**CONNECTIONS:** Screwed (NPT / BSPT / BSP)

### LIMITING CONDITIONS:

PMA: Max. allowable pressure	16 bar(g)
TMA: Max. allowable temperature	220 °C
PMO: Max. operating pressure	10.5 bar(g)
Cold hydro test pressure	24 bar(g)

### AIR DISCHARGE CAPACITY AT 15 °C

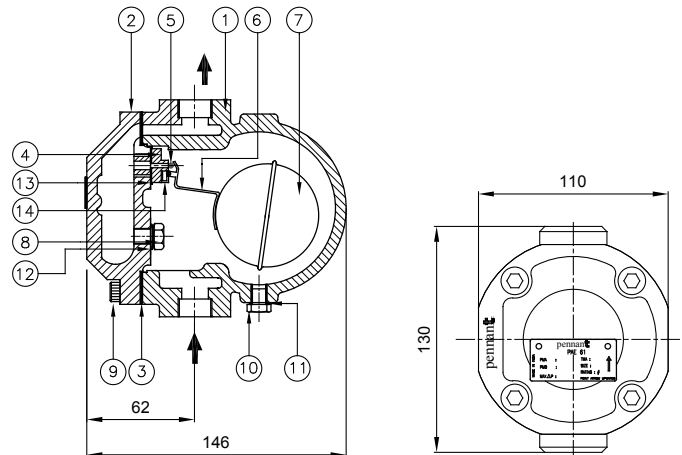
Diff. Pressure (bar)	Orifice size	m <sup>3</sup> /hr
1.00	2.5 mm	4.09
2.00		6.14
3.00		8.18
5.00		12.28
7.00		16.37
9.00		20.46
10.50		23.64

### INSTALLATION:

Vertical installation with flow from bottom to top. The air eliminator should be installed at all high points of a liquid system wherever air can collect. It should be installed vertically above the pipe or equipment with inlet at the bottom. The arrow on the nameplate should be pointing vertically upwards.

### AVAILABLE SPARES:

Valve Seat, Ball Float & Lever Assly., Gaskets



### MATERIAL:

No.	PART	MATERIAL	QTY. (Nos.)
1.	BODY	CAST IRON	1
2.	COVER	IS : 210 FG200	1
3.	GASKET (COVER)	NON CAF	1
4.	VALVE SEAT	AISI 410 /	1
5.	VALVE	AISI 420	1
6.	LEVER	AISI 304	1
7.	FLOAT	AISI 304	1
8.	PLUG	AISI 304	1
9.	BOLT	HIGH TENSILE	4
10.	DRAIN PLUG	C.S	1
11.	GASKET DRAIN PLUG	COPPER	1
12.	GASKET PLUG	COPPER	1
13.	GASKET VALVE SEAT	COPPER	1
14.	BRACKET ASSLY.	AISI 304	1

**WEIGHT:** (approx): 3.3 kg.

### CAUTION:

DO NOT USE FOR HAZARDOUS/POISONOUS MEDIA