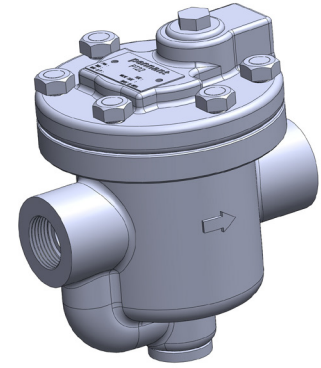


PT22

INVERTED BUCKET STEAM TRAPS (CAST IRON)



DESCRIPTION:

Inverted bucket steam trap with all stainless steel internals. Best suited for equipment drains with medium to heavy condensate loads. Intermittent operation.

FEATURES:

The inverted bucket arrangement operates on the density difference between steam and water, giving a cyclic operation for discharge of the accumulated condensate.

High condensate handling capacities even at low pressure, permit the use of small trap sizes to suit many applications.

The valve and valve seat are hardened by a special induction hardening process to withstand continuous prolonged operation.

Perfect shut-off, no steam loss.

SIZES:

NPS 1/2, 3/4

CONNECTIONS:

Screwed (NPT/BSPT/BSP)

LIMITING CONDITIONS:

PMA: Max. allowable pressure	250 psig
TMA: Max. allowable temp.	428 °F
Maximum operating back pressure at the outlet should not exceed 90% of the inlet pressure	
Minimum diff. pressure for satisfactory operation	1.5 psi
Cold hydro test pressure	375 psig

INSTALLATION:

The trap should be fitted with the inlet and outlet connections horizontally in-line. Correct fitment with body vertical is essential for easy movement of the bucket. The bypass arrangement should be above the level of the trap.

Full port isolation valves should be fitted before and after the trap, to be used when the trap has to be opened for maintenance.

MAINTENANCE:

This product can be maintained inline without disturbing the piping connections. Ensure that the trap is isolated - upstream & downstream - before attempting to dismantle it. It is recommended that the trap be opened periodically and the internals inspected for wear, damage, and dirt. All worn or damaged parts should be replaced with new spares. A full new internal kit comprising of the valve pin, valve seat, bracket and lever, should be replaced as a set. The bucket vent hole should be cleaned.

IMPORTANT:

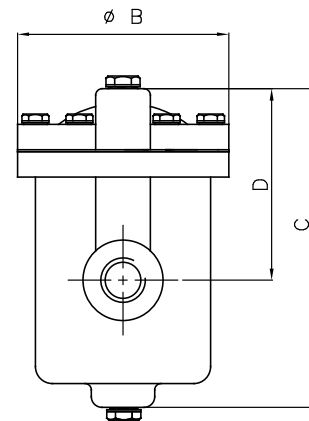
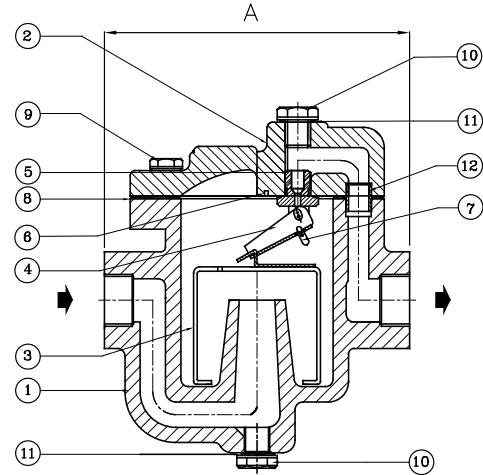
Ensure that the trap is primed by opening the inlet valve only a crack at start-up, allowing water to fill the trap before the steam enters. The inlet valve should be opened fully only after the trap is filled with water.

The trap should be installed as close as possible to the equipment to be drained.

For new pipelines, ensure that the lines are properly flushed, prior to fitting the trap.

MATERIAL:

NO.	PART	MATERIAL	QTY.
1.	BODY	CAST IRON	01
2.	COVER	CAST IRON	01
3.	BUCKET ASSLY	AISI 304	01
4.	LEVER ASSLY.	AISI 304	01
5.	VALVE SEAT (HARDENED)	AISI 410/420	01
6.	BRACKET	AISI304	01
7.	VALVE PIN (HARDENED)	AISI 410/420	00
8.	GASKET (COVER)	NON CAF	01
9.	BOLT	HIGH TENSILE	06
10.	PLUG	CARBON STEEL	02
11.	GASKET (PLUG)	COPPER	02
12.	LOCATING TUBE	STAINLESS STEEL	01



DIMENSIONS: Nominal in mm

MODEL	SIZE	A	B	C	D	Wt.
PT22	1/2", 3/4"	4.72	3.95	5.12	2.8	5.9 lbs

TRAP DISCHARGE CAPACITY IN lbs/hr

MODEL	TRAP SIZE	ORIFICE SIZE	DIFFERENTIAL PRESSURE (psi)										
			7	14	30	43	57	70	85	100	120	142	150
PT22	1/2"	3/32"	90	175	275	310	400	420	465	500	540	575	585
		7/16"	145	255	400	475	550	585	620	640	660	0	0
	3/4"	1/8"	245	355	465	550	620	0	0	0	0	0	0

AVAILABLE SPARES:

SPARE KIT: Valve Pin, Valve Seat, Bracket & Lever Assly. (Op. diff. press. should be specified) Bucket Assly, Set of Gaskets.

ORDERING INFORMATION:

Refer 'How to Order' page